



KUVA: KAI WIDELL / SYKE

# Characterizing sediment quality and related risks for developing national guidance

Jussi Reinikainen

Common Forum  
June 1, 2023 Stockholm



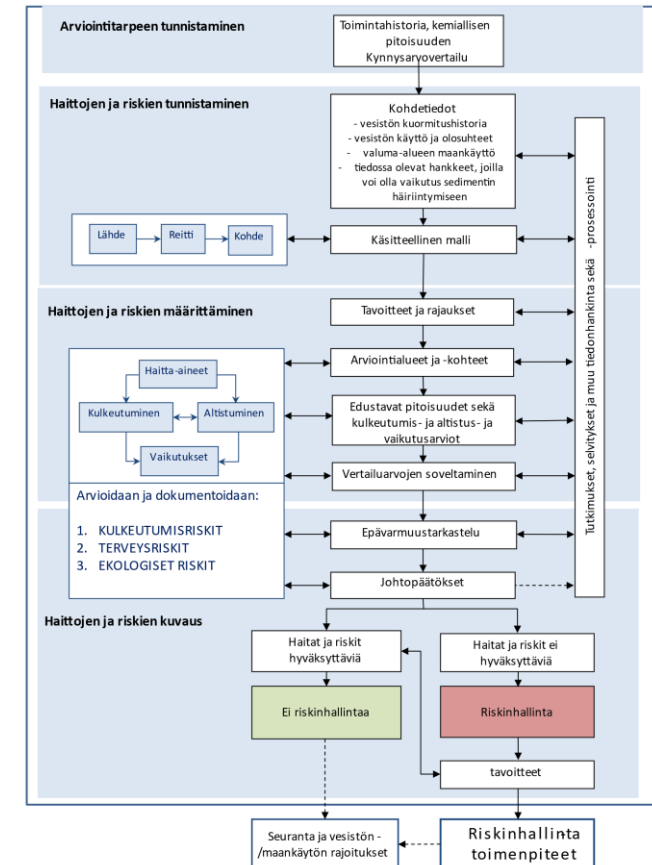
Suomen ympäristökeskus  
Finlands miljöcentral  
Finnish Environment Institute

# Starting points

- **No EU regulations for managing contaminated sediments**
    - Indirect policy steering by the Water Framework, Priority Substances (EQS Directive) and Marine Strategy Directives
    - Draft Environmental Quality Standard for TBT: 1,6 µg/kg dw -> application in the management of contaminated sediments?
    - In Baltic Sea region, EU regulations supplemented by the Baltic Sea action program of HELCOM (e.g., sediment guidances)
  - **No *specific* national regulations for managing contaminated sediments**
    - Liabilities, responsibilities and administrative processes not defined; e.g. difficulties in addressing the 'polluter pays principle' and setting retrospective liabilities
    - Contaminated land regulations apply when sediment contamination linked directly with soil contamination
  - **Assessment and management of sediment contamination mainly related to dredging and disposal**
    - E.g., maintenance of harbours and waterways, building new infrastructure near the coastline
    - Dredged sediments mainly disposed at sea, but reuse on land highly favored -> new regulations on soil/sediment reuse in prep.
    - Dredging and sea disposal based on national guidance; not applicable to stationary sediments (sediments in place)
    - Contaminated sediments identified/mapped (years ago) and individual sites remediated/managed (e.g. PCDD/F, TBT, metals...)
- **Need for generic national guidance on how to assess and manage sediment contamination**

# Draft guidance on case specific risk assessment of sediments

- Recent surveys on international practices on contaminated sediments
- Following national guidances on risk assessment of contaminated land and old/closed mining sites
  - Risk/hazard identification
  - Risk determination
  - Risk characterization
- Ecological risks, health risks, risks due to contaminant migration
- No guideline values (to define acceptability of risks), but some threshold values (triggering risk assessment)
- Main focus on ecological risks (often NOT the main concern on land...)
- NOT legally binding document
- Complemented by guidance on sustainable risk management of sediments (as in the case of guidance on contaminated land)



# Questions

- **How do you regulate assessment and management of sediment contamination?**
  - Specific national regulations and/or guidances...?
  - Liabilites defined...?
- **What about the assessment/management practices?**
  - Experiences, challenges, methods used, money spent (in comparison with contaminated land) etc.
- **Ideas on the applicabilty of EU water policy on managing historically contaminated sediments?**
  - E.g. potential future EQSs

**Kiitos, tack, thank you!**



**Suomen ympäristökeskus  
Finlands miljöcentral  
Finnish Environment Institute**