

A scenic landscape featuring a tall, dark tower in the background, partially obscured by a large tree. The foreground shows a person standing in a field, possibly setting up a geodesic dome structure. The sky is filled with soft, golden light, suggesting a sunrise or sunset. The overall atmosphere is serene and natural.

COMMON FORUM STOCKHOLM

Ingela Hiltula, Head of Circular Economy department

Welcome to the Swedish Environmental protection agency

Last Common Forum meeting in Sweden was in 2007

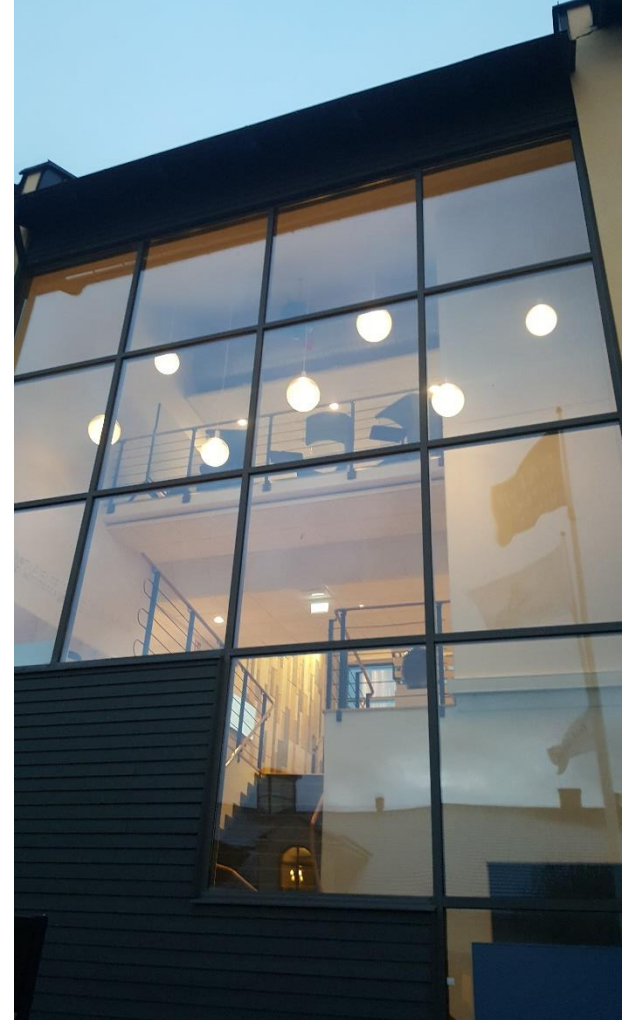
New building, on the premises of a former textile factory

© SEPA



The Swedish EPA

- A total of around 750 employees in our offices in Stockholm and in Östersund.
- We work with issues related to the
 - climate and air quality,
 - biodiversity,
 - contaminated sites,
 - the circular economy and waste,
 - environmental monitoring,
 - and environmental research.

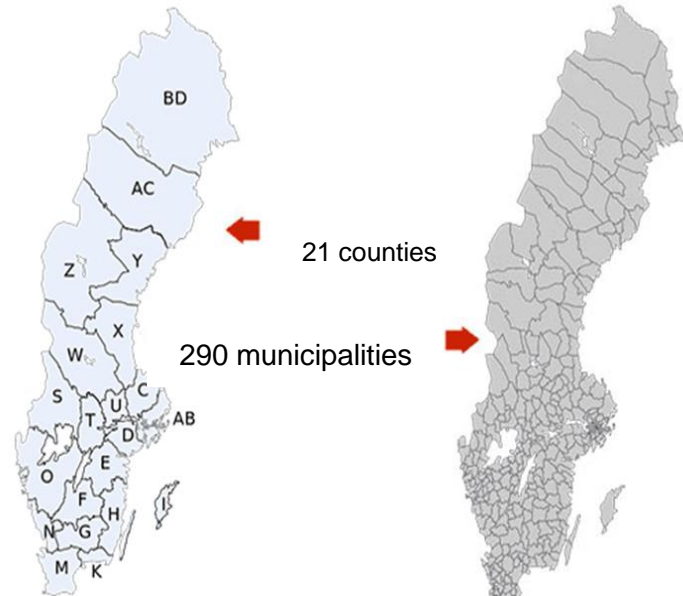


The role of the Swedish EPA

- Compiling knowledge and documentation
- Developing environmental policy and guidelines
- Implementing environmental policy
- Supervision and regulation

In collaboration with County Administrative Boards and municipalities

- 21 County Administrative Boards in Sweden
- 290 municipalities
 - Very varied in size – a northern municipality can cover an area the same size as several counties in central Sweden
- The municipalities have the primary responsibility of supervision



The Swedish presidency within the EU

- Small government office
- In relation, many and large government authorities
- Swedish authorities have had a major role within the presidency
- Among others, the SEPA is coordinating the work in preparation for the new Soil Health Law



SWEDISH ENVIRONMENTAL
PROTECTION AGENCY