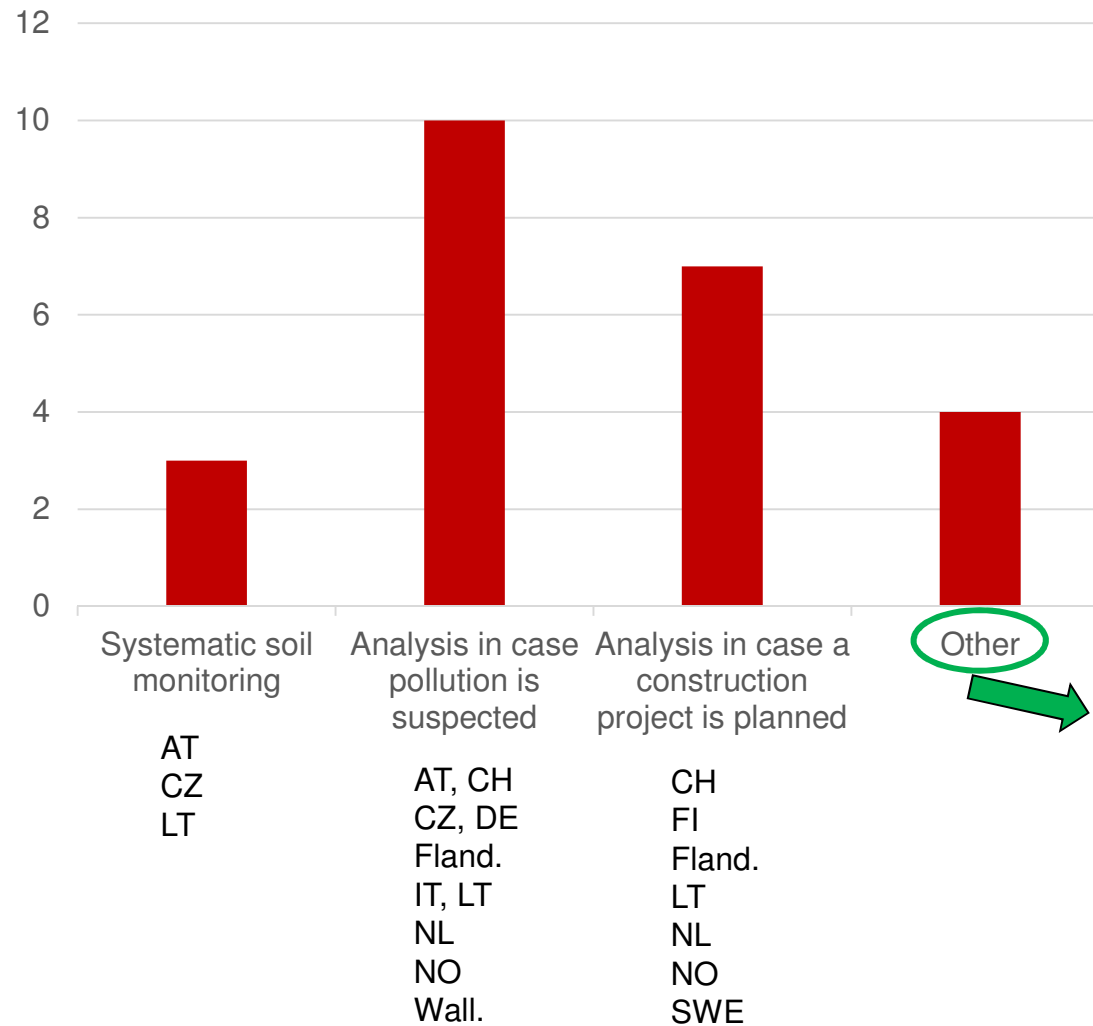




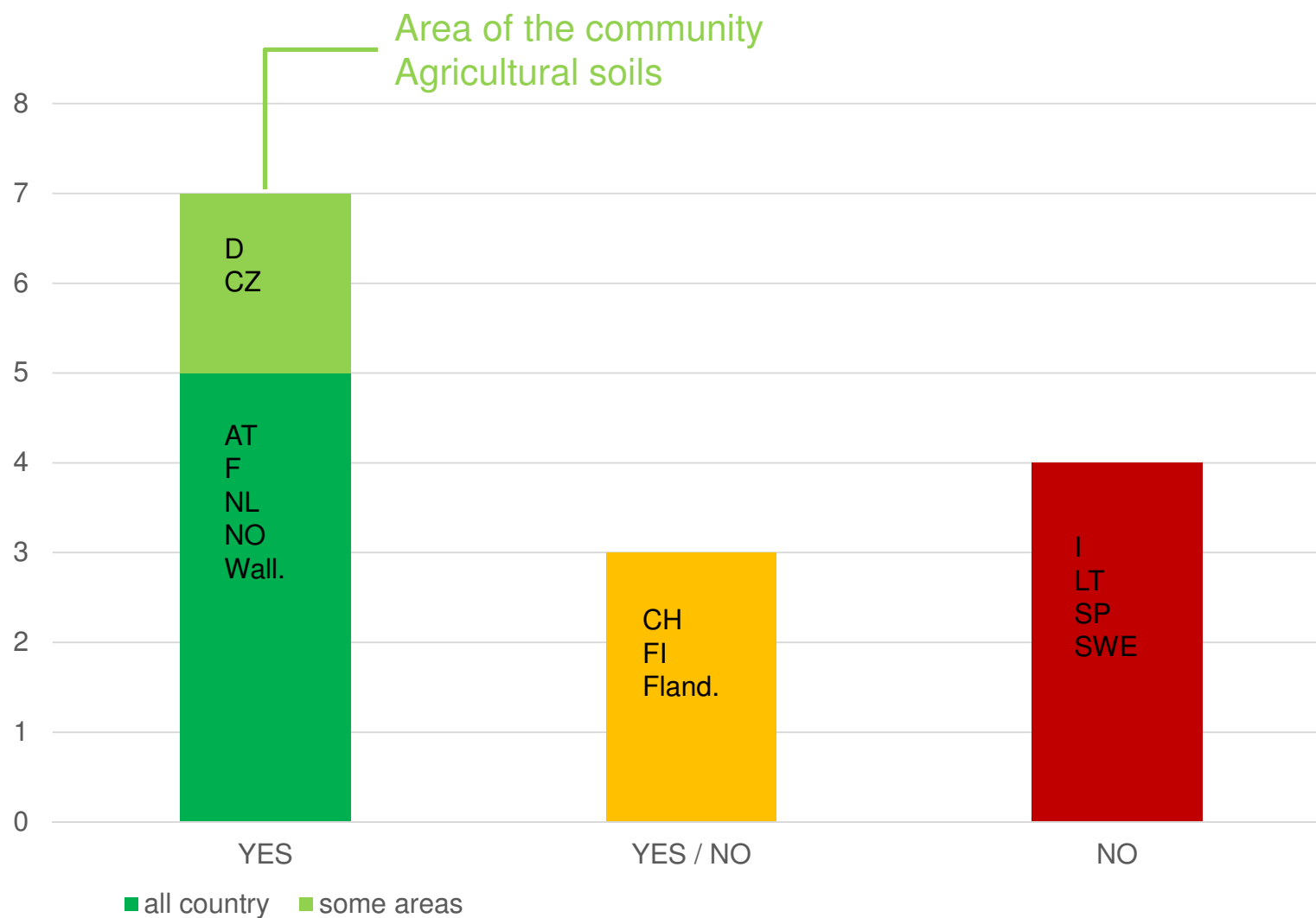
## 5. Identification of soil pollution /contamination



Regional surveys (ES)  
Normal soil investigation (FI)  
Analysis in case of a trigger for soil orientation study (Wallonie)

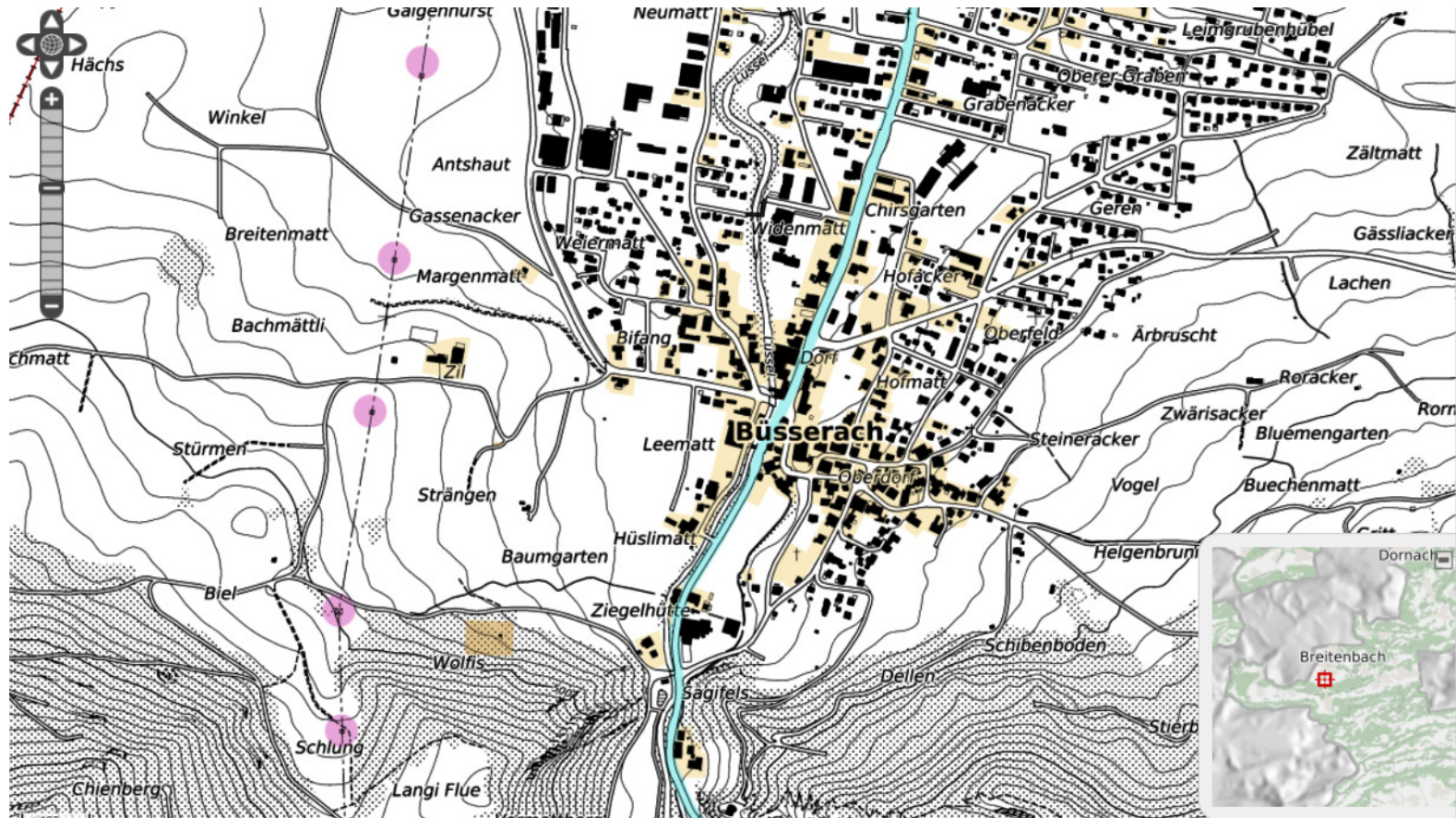


## 6. Inventory of soil pollution / contamination?



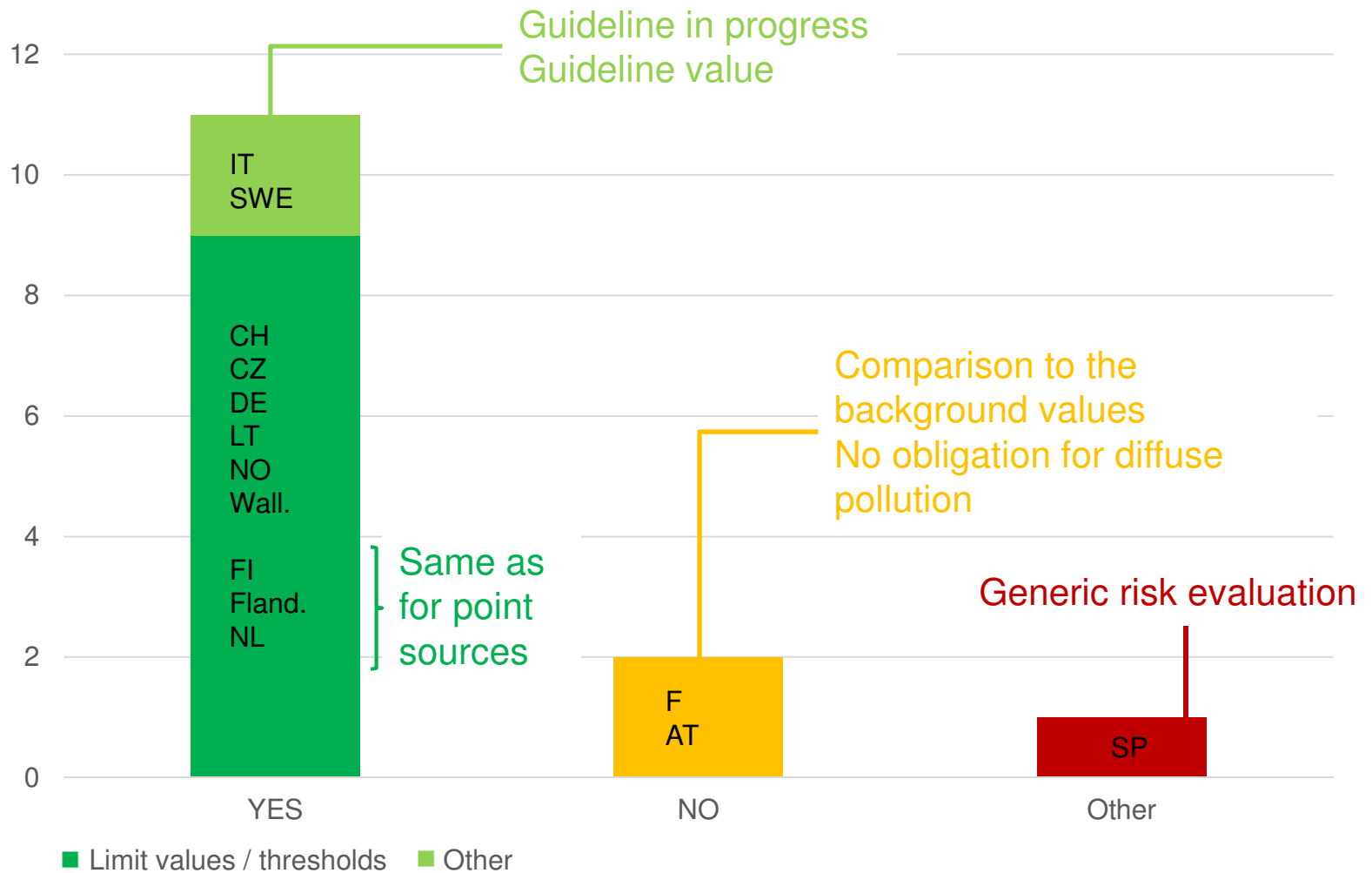


# Exemple of inventory in a CH-canton





## 7. Decision making tools / procedures to evaluate risks?





## 7. Type of soil use?

Different types of soil use are always considered:

- All agricultural soil
- Sensitive land use and less sensitive land use
- Industrial and other non-sensitive soil use, residential and other more sensitive soil use (e.g. parks)
- Most sensitive land, such as waterfields protection zones, agriculture land, residential areas - recreational areas, commercial land use, industrial land use
- Natural, agricultural, residential, recreative, commercial, industrial
- Agriculture, horticulture, playgrounds, residential areas, parks and recreational facilities, industrial and commercial use
- Cultivation of fodder / food plants, private garden, playgrounds
- Industry and traffic, housing / playgrounds / sport area, central area / offices and business
- Housing – kindergartens – playgrounds - sports areas – parks, central areas - offices – businesses, Industry - traffic
- natural, agricultural, residential, recreative - commercial, industrial
- different agricultural uses (i) arable land, (ii) wine and fruit growing (iii) grassland (pastures), forestry (differentiated whether elevated carbonate-content are likely) and urban areas (differentiated whether oral uptake is likely)



## 7. Measures in case limit values / thresholds are exceeded

- Risk assessment (D, F, SWE)
  - to determine measures for risk reduction, as remediation (FI)
  - remediation or limitations in use (CH, NL)
  - monitoring, remediation (NO)
- Further investigations to develop site-specific measures including monitoring, use restrictions, soil amendments, remediation (AT)
- Any activity is forbidden (crops, building houses, ...) (LT, no case of diffuse pollution)
- Application of sewage sludge and sediments on agricultural soil is not allowed (CZ, preventive value)